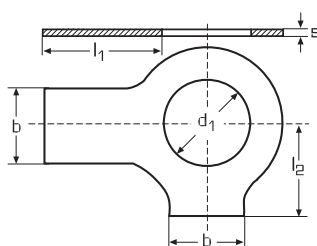



DIN 463

ГОСТ 13463-77



Шайба с двумя лапками

Нержавеющая сталь А2 (АISI 304)/А4 (АISI 316)

Для резьбы	Вес 100 шт./кг	d1	l1	l2	b	s	
M 4	0,033	4,3	14,0	6,5	5,0	0,38	100
M 5	0,055	5,3	16,0	8,0	6,0	0,5	100
M 6	0,080	6,4	18,0	9,0	7,0	0,5	100
M 8	0,171	8,4	20,0	11,0	8,0	0,75	100
M 10	0,251	10,5	22,0	13,0	10,0	0,75	100
M 12	0,441	13,0	28,0	15,0	12,0	1,0	100
M 14	0,509	15,0	28,0	16,0	12,0	1,0	100
M 16	0,630	17,0	32,0	18,0	15,0	1,0	100
M 18	0,824	19,0	36,0	20,0	18,0	1,0	50
M 20	0,900	21,0	36,0	21,0	18,0	1,0	50
M 22	1,000	23,0	42,0	23,0	20,0	1,0	50
M 24	1,200	25,0	42,0	25,0	20,0	1,0	50
M 27	2,530	28,0	48,0	29,0	23,0	1,6	50
M 30	3,140	31,0	52,0	32,0	26,0	1,6	20
M 33	3,560	34,0	56,0	34,0	28,0	1,6	20
M 36	4,250	37,0	60,0	38,0	30,0	1,6	20
M 39	4,970	40,0	64,0	41,0	32,0	1,6	10