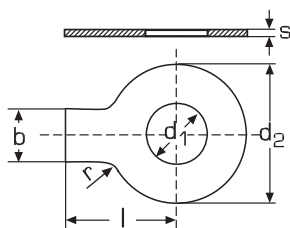



# DIN 93

ГОСТ 13463



## Шайба с лапкой

Нержавеющая сталь A2 (AISI 304)/A4 (AISI 316)

d1	Для резьбы	Вес 100 шт./кг	b	d2	l	s	r	
4,3	M4	0,049	5,0	14,0	14,0	0,38	2,5	200
5,3	M5	0,105	6,0	17,0	16,0	0,5	2,5	200
6,4	M6	0,121	7,0	19,0	18,0	0,5	4,0	200
8,4	M8	0,232	8,0	22,0	20,0	0,75	4,0	100
10,5	M10	0,313	10,0	26,0	22,0	1,0	4,0	100
13,0	M12	0,600	12,0	30,0	28,0	1,0	6,0	100
15,0	M14	0,700	12,0	33,0	28,0	1,0	10,0	100
17,0	M16	0,850	15,0	36,0	32,0	1,0	10,0	100
19,0	M18	1,100	18,0	40,0	36,0	1,0	10,0	100
21,0	M20	1,100	18,0	42,0	36,0	1,0	10,0	50
23,0	M22	1,480	20,0	50,0	42,0	1,0	10,0	50
25,0	M24	1,420	20,0	50,0	42,0	1,6	10,0	50
28,0	M27	3,100	23,0	58,0	48,0	1,6	10,0	50
31,0	M30	3,630	26,0	63,0	52,0	1,6	16,0	50
34,0	M33	4,200	28,0	68,0	56,0	1,6	16,0	20
37,0	M36	5,130	30,0	75,0	60,0	1,6	16,0	20
40,0	M39	5,970	32,0	82,0	64,0	1,6	16,0	10